



DFJ-60B TYPE "B" DFJ-90D TYPE "D" Fixed Temperature Thermal Detectors



New design plus improved electronics means better protection.

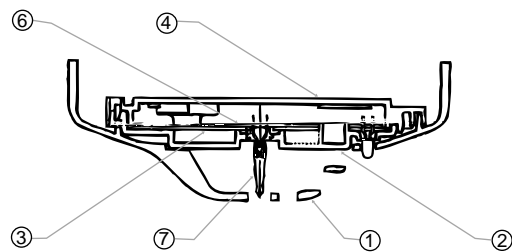
High reliability is one of the all-important features in a system for detecting heat build-up in a factory, office or warehousing facility. Hochiki's new heat detector meets your requirements for early detection with 2 DFJ Series detectors - DFJ-60B and DFJ-90D - having different rate of rise specifications for the thermistor allow easy customizing of the detector to the application. The design and performance characteristics of these new-generation detectors make them ideal for use wherever there is wide fluctuation in temperature.

Install it where temperature fluctuates rapidly at fire.

1. Hochiki's overlapping standard of detection and the special circuitry built into the detector head afford double protection in locations where temperature is likely to fluctuate rapidly.
2. In addition to delivering performance through design, the unit's operating characteristics -- one of which is it consumes very low current -makes it highly practical and a cost saver in large enclosed installations.
3. Handy bayonet fitting enables easy on and off (installing and removal) of the detector head, while the Hochiki Common Mounting Base allows heads to be freely interchanged.

Installation & Maintenance

Each detector has been designed with a one piece outer cover which gives an aesthetically pleasing modern low profile shape. Twin fire alarm LEDs give 360° viewing. A common mounting base allows easy detector interchange. A simple anti tamper locking mechanism is provided which is enabled by removing a small plastic lug on the head and can only be removed using a special head removal tool.



1. OUTER COVER
2. ENCLOSURE
3. SEALING SPONGE
4. ENCLOSURE COVER
5. CONTACT BLADE
6. P.C. BOARD
7. THERMISTOR

AUSTRALIAN DISTRIBUTORS

FIRE & SAFETY PRODUCTS (A/ASIA) PTY. LTD.

A.C.N. 007 954 832 (Inc. in South Australia)

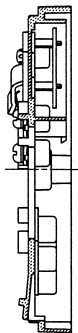
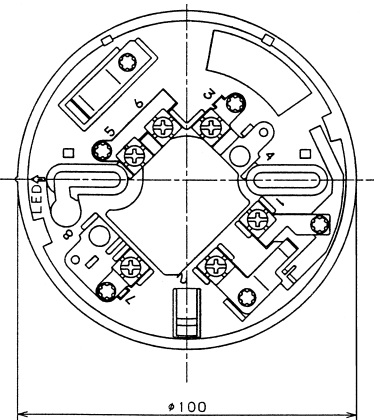
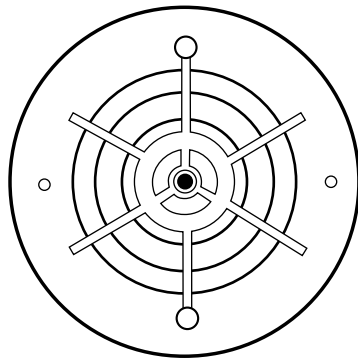
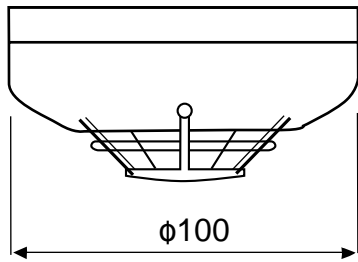
85 ORSMOND STREET
PO BOX 131
HINDMARSH SA 5007
PHONE: (08) 8346 5061
FAX: (08) 8340 0099



Quality
Endorsed
Company
AS NZ ISO 9002
Lic No. QEC 1411

A member of the WILLIAMS GROUP OF COMPANIES

SPECIALIST DISTRIBUTORS OF FIRE DETECTION & SPRINKLER PRODUCTS



SPECIFICATION

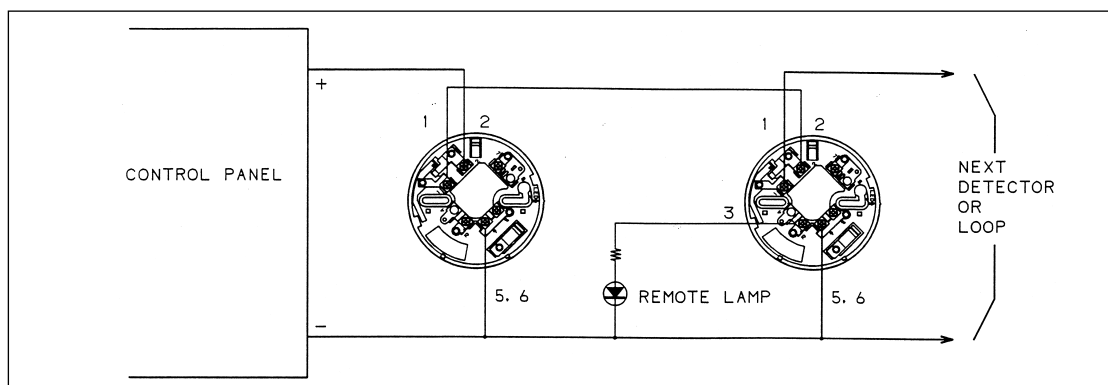
Line voltage to detector:	
Rated voltage	:DC24.0V
Working voltage	:DC15.0-30.0V
Allowable Maximum Voltage	:DC42.0V
Current at Quiescent state: DFJ-60B	
Supervisory current	:35.0 μ A at 24V
	:31.5 μ A at 15V
	:37.5 μ A at 30V
Surge current	:160 μ A at 24V
Current at Quiescent state: DFJ-90D	
Supervisory current	:50 μ A at 24V
	:46.5 μ A at 15V
	:52.5 μ A at 30V
Surge current	:160 μ A at 24V
Alarm state:	
Maximum voltage	:17.6V at 80mA
Minimum voltage	:6.02V at 10mA
Maximum current	:80mA Max.
Minimum current	:10mA
Alarming fixed temperature:	
DFJ-60B	:63 +8, -5 $^{\circ}$ C
DFJ-90D	:92 +5, -4 $^{\circ}$ C
Operating temperature range:	
DFJ-60B	:-10~ +50 $^{\circ}$ C
DFJ-90D	:-10~ +70 $^{\circ}$ C

Mounting holes	:48~74mm in pitch
Weight	:125g with the base
Colour	:White

SSL Listing Number:	
Type B DFJ-60B	afp:1120
Type D DFJ-90D	afp:1121

OPERATION

The new DFJ series of fixed Temperature Thermal Detector incorporate with highly linear thermistor circuit, with the thermistor being mounted externally. A voltage is produced proportional to temperature. This is scaled, linearised and then used to trigger the internal latching circuit.



Maximum Current at "R"
Terminal (for Remote LED) : 30mA