



## DCD-A TYPE "A" DCD-C TYPE "C" Combination Thermal Detectors

**New design plus improved electronics means better protection.**

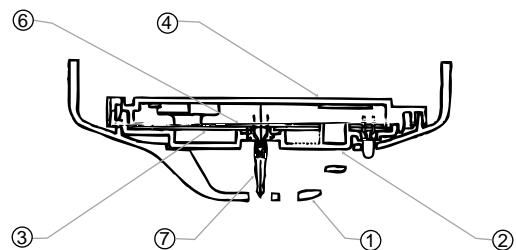
High reliability is one of the all-important features in a system for detecting heat build-up in a factory, office or warehousing facility. Hochiki's new heat detector meets your requirements for early detection with 2 in 1 functioning using the rate-of rise method and independently functioning fixed temperature method for a double standard of positive protection.

**Install it where temperature fluctuates rapidly at fire.**

1. Hochiki's overlapping standard of detection and the special circuitry built into the detector head afford double protection in locations where temperature is likely to fluctuate rapidly.
2. In addition to delivering performance through design, the unit's operating characteristics -- one of which is it consumes very low current -- makes it highly practical and a cost saver in large enclosed installations.
3. Handy bayonet fitting enables easy on and off (installing and removal) of the detector head, while the Hochiki Common Mounting Base allows heads to be freely interchanged.

### Installation & Maintenance

Each detector has been designed with a one piece outer cover which gives an aesthetically pleasing modern low profile shape. Twin fire alarm LEDs give 360° viewing. A common mounting base allows easy detector interchange. A simple anti tamper locking mechanism is provided which is enabled by removing a small plastic lug on the head and can only be removed using a special head removal tool.



1. OUTER COVER
2. ENCLOSURE
3. SEALING SPONGE
4. ENCLOSURE COVER
5. CONTACT BLADE
6. P.C. BOARD
7. THERMISTOR

#### AUSTRALIAN DISTRIBUTORS

### FIRE & SAFETY PRODUCTS (A/ASIA) PTY. LTD.

A.C.N. 007 954 832 (Inc. in South Australia)

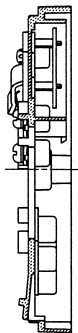
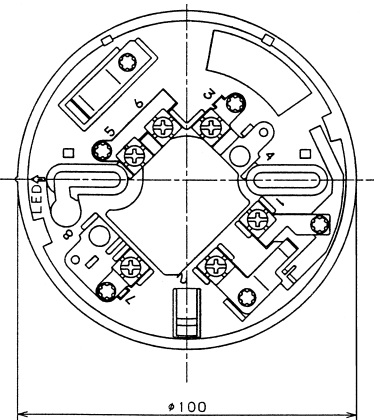
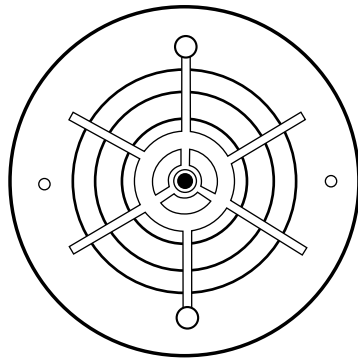
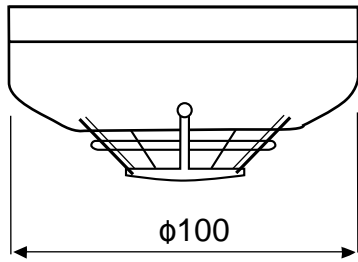
85 ORSMOND STREET  
PO BOX 131  
HINDMARSH SA 5007  
PHONE: (08) 8346 5061  
FAX: (08) 8340 0099



Quality  
Endorsed  
Company  
AS NZ ISO 9002  
Lic No. OEC 1411

A member of the WILLIAMS GROUP OF COMPANIES

**SPECIALIST DISTRIBUTORS OF FIRE DETECTION & SPRINKLER PRODUCTS**

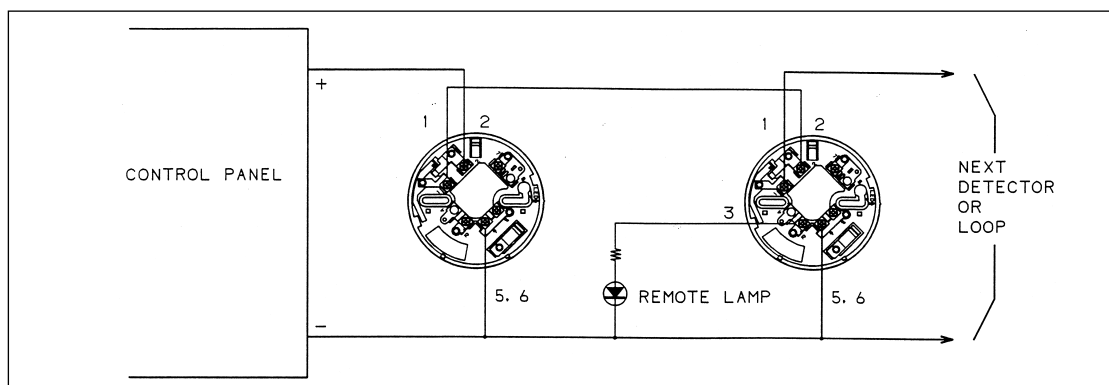


## SPECIFICATION

Line voltage to detector:	
Rated voltage	:DC24.0V
Working voltage	:DC15.0~30.0W
Allowable Maximum Voltage	:DC42.0V
Current at Quiescent state: DCD-A	
Supervisory current	:35.0 $\mu$ A at 24V
	:31.5 $\mu$ A at 15V
	:37.5 $\mu$ A at 30V
	:160 $\mu$ A at 24V
Surge current	
Current at Quiescent state: DCD-C	
Supervisory current	:50 $\mu$ A at 24V
	:46.5 $\mu$ A at 15V
	:52.5 $\mu$ A at 30V
	:160 $\mu$ A at 24V
Surge current	
Alarm state:	
Maximum voltage	:17.6V at 80mA
Minimum voltage	:6.02V at 10mA
Maximum current	:80mA Max.
Minimum current	:10mA
Alarming fixed temperature:	
	DCD-A :63 +8, -5 $^{\circ}$ C
	DCD-C :92 +5, -4 $^{\circ}$ C
Operating temperature range:	
	DCD-A :-10 ~ +50 $^{\circ}$ C
	DCD-C :-10 ~ +70 $^{\circ}$ C
Mounting holes	:48 ~ 74mm in pitch
Weight	:125g with the base
Colour	:White
SSL Listing Number:	
	Type A DCD-A            afp:1119
	Type C DCD-C            afp:1118

## OPERATION

The new DCD series of Combination Thermal Detector incorporate with highly linear thermistor circuit, with the thermistor being mounted externally. A voltage is produced proportional to temperature. This is scaled, linearised and then used to trigger the internal latching circuit.



Maximum Current at "R"  
Terminal (for Remote LED) : 30mA