



FIRE & SAFETY PRODUCTS (A/ASIA) PTY. LTD.

A.C.N. 007 954 832 (Inc. in South Australia)



85 ORSMOND STREET
PO BOX 131
HINDMARSH SA 5007
PHONE: (08) 8346 5061
FAX: (08) 8340 0099

A member of the WILLIAMS GROUP OF COMPANIES

SPECIALIST DISTRIBUTORS OF FIRE PROTECTION PRODUCTS



Quality
Endorsed
Company
AS N2 ISO 9002
Lic No. QEC 1411



Mini Zone Module: CHQ-MZ

Model CHQ-MZ Mini Zone Module is designed to interface the conventional detectors to the Hochiki newly developed transmission protocol Fire Alarm System. The CHQ-MZ has the capability of connecting up to six or more (depends on type) slave detectors. The slave circuit is fault monitored, and any Hochiki Fire Detector can be connected to this module.

Features

Mini Zone Monitor

- Single zone for connection of up to 6 conventional detectors
(See tables for compatible detectors)
- Alarm interrupt level 2
- Zone open and short circuit monitored
- Simple and reliable addressing by means of 8-bit DIL switches
- Loop powered with low current consumption utilising the unique 'Low Power Mode'
- Remote fire indication output
- Fire test facility
- Supervised external power input
- Status LED for indication of communication polling

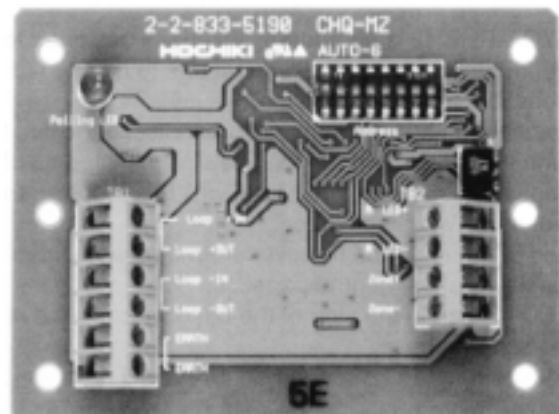
Operation

The CHQ-MZ has fully monitored zones for open and short circuit, achieved by a End Of Line (EOL) unit (model:TE-RH-E). When a fire is generated on the

zone, the unit generates a level 2 interrupt signal which allows the fire alarm control panel to respond quickly to the fire and for the remote LED output on the CHQ-MZ to operate. A red status LED flashes when the unit is polled by the fire alarm panel. This unit is addressed via a simple DIL switch between 1 and 127. Connection to loop and field wiring is via simple screw terminals.

Applications

The Mini-Zone Monitor has been designed to interface to a small conventional zone, allowing up to 6 conventional smoke and heat detectors to be interfaced with Hochiki new protocol systems. The unit provides a remote alarm output for local indication and can also be used as a general purpose monitored input (Additional remote indicator LED should not be connected to any of the slave bases).



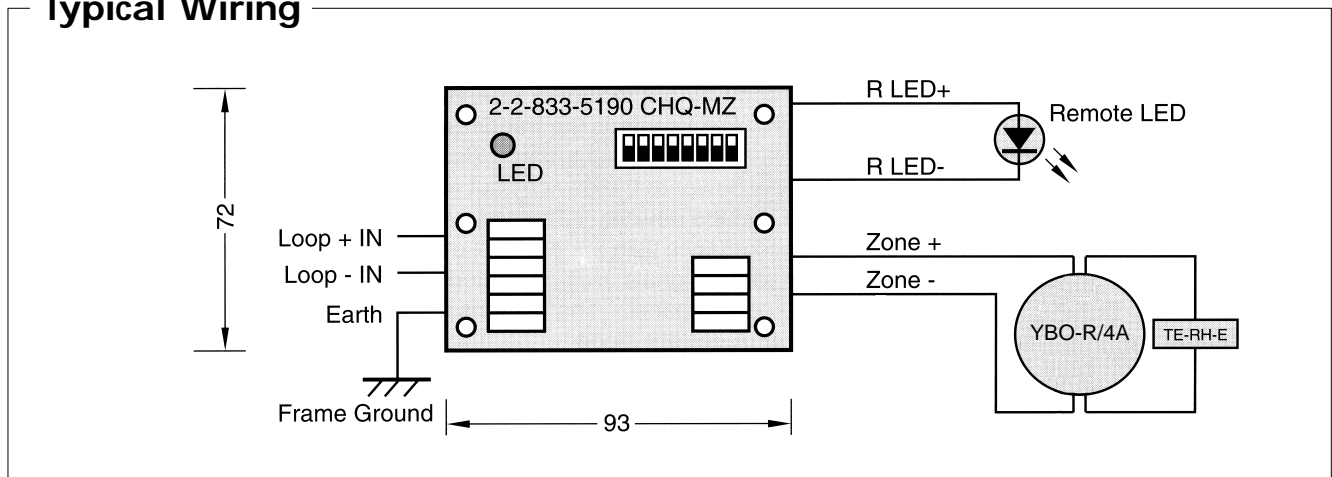
Specifications

Supply Voltage Range	Maximum Rated Voltage	CHQ-MZ	
	V _{Low}	41V DC	
	Pulse Voltage	17V - 31V	
Current Consumption	Quiescent	7V - 9V	
	Low Power Mode	0.75s Polling	260µA (Typ)
		1.5s Polling	120µA (Typ)
	Current in Alarm	S-SC	110µA (Typ)
	Data Transmission Current	89.37mA (in 20ms)	
Zone Line Output Current in Alarm	22mA ± 20%		
Zone Line Resistance	28mA		
Zone Line Capacitance	≤ 50Ω		
End of Line Device	≤ 0.3µF		
Remote LED Output	TE-RH-E		
Number of Slave Detectors	6mA (Open collector Output)		
Connectable detector base on slave line	SLR, SIJ, DCD, DFJ	6	
Operating Ambient Temperature Range	YBO-R/4A		
Storage Temperature Range (Under Humidity 80%)	-10°C ~ 50°C		
Allowable Ambient Humidity (at 40°C)	-30°C ~ 60°C		
Dimensions	80% RH Non-Condensing		
Weight	93mm x 72mm		
	Approximately 40g (Not including the mold case)		

Compatible Detectors & Base

DCD, DFJ, SLR, SIJ & YBO-R/4A Base

Typical Wiring



In line with a continuous programme of product development, the Manufacturer reserves the right to modify or update specifications without notice. It should be noted that the exact specification may vary depending on the configuration of the designed system. The information herein is to assist in determining whether this product is suitable for a given application. This information does not purport to cover all details or variations in the equipment described, nor does it provide for every possible contingency to be met in connection with installation, operation and maintenance. We request that customers inspect and test our products before use and satisfy themselves as to contents and suitability. NOTHING HEREIN SHALL CONSTITUTE A WARRANTY, EXPRESSED OR IMPLIED, INCLUDING ANY WARRANTY OF MERCHANTABILITY OR FITNESS FOR A PARTICULAR PURPOSE.

Issue A August 1999